



GAT MONTHLY MEMBERSHIP PROGRESS REPORT

Results as of: 8/31/2023

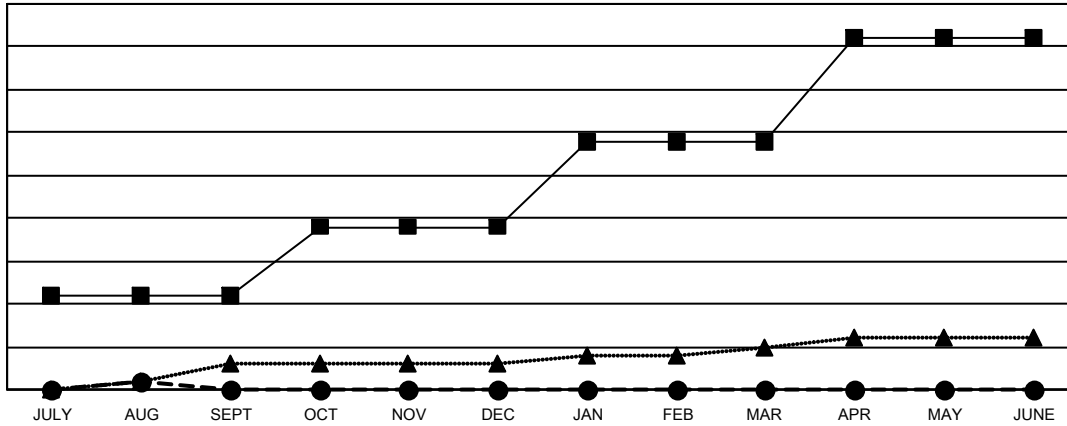
Multiple District 4

LOCATION: CALIFORNIA

Clubs			
RESULTS FOR 2023-2024			
QUARTER	NEW CLUB GOAL	NEW CLUBS	DROPPED CLUBS
JULY/AUG/SEPT	11	1	4
OCT/NOV/DEC	8	0	0
JAN/FEB/MAR	10	0	0
APR/MAY/JUNE	12	0	0

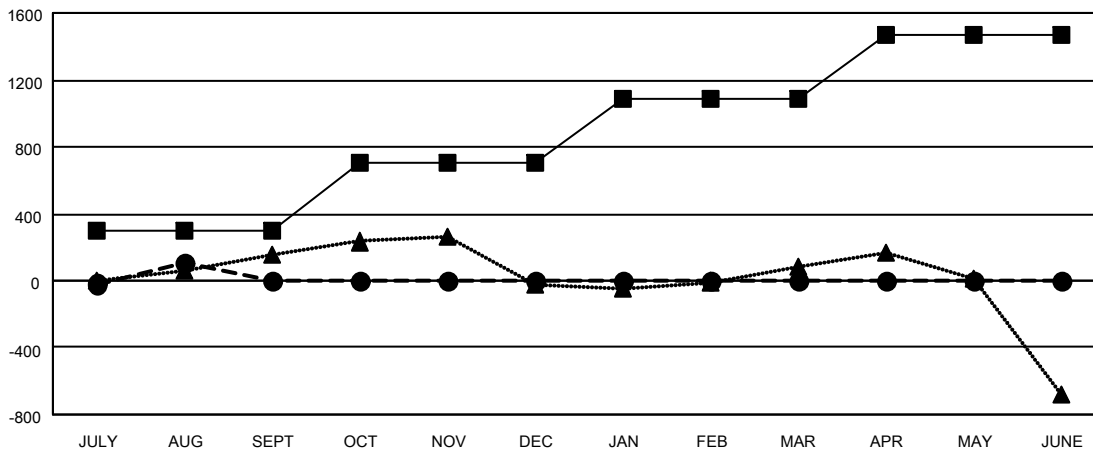
Members			
RESULTS FOR 2023-2024			
QUARTER	MEMBER GROWTH NET GOAL	MEMBER GROWTH ACTUAL	DROPPED MEMBERS ACTUAL (including transfers)
JULY/AUG/SEPT	295	666	485
OCT/NOV/DEC	412	0	0
JAN/FEB/MAR	380	0	0
APR/MAY/JUNE	386	0	0

GOALS AND ACTUAL NEW CLUBS CUMULATIVE



- CURRENT YEAR GOALS FOR NEW CLUBS
- CURRENT YEAR ACTUAL NEW CLUBS
- ▲- LAST YEAR ACTUAL NEW CLUBS

GOALS AND ACTUAL MEMBERS CUMULATIVE



- MEMBER GROWTH NET GOAL
- MEMBER GROWTH ACTUAL
- ▲- LAST YEAR MEMBERSHIP ACTUAL

DROPPED CLUBS: 4	
DROPPED MEMBERS	
DECEASED	46
CLUB CANCELLED	0
OTHER	441
TOTAL	487

196 CLUBS OF 659 ADDED 1 OR MORE NEW MEMBERS

[CLICK HERE FOR CUMULATIVE MEMBERSHIP DATA](#)

GENDER DISTRIBUTION	
MALE	10,266 (57.78%)
FEMALE	7,490 (42.15%)
NON BINARY	0 (0.00%)
PREFER NOT TO ANSWER	12 (0.07%)
TOTAL FAMILY UNIT MEMBERS	3,441
FAMILY MEMBERS PAYING HALF DUES	1,832